



**Cancer  
Society**

Te Kāhui Matepukupuku  
o Aotearoa



# Your good Will will make a difference

*A guide to leaving a gift in your Will  
to the Cancer Society*

## Thank you for considering the Cancer Society for your bequest.

In my work as an Oncologist I see the Cancer Society playing a significant part in the lives of many cancer patients and their families/whānau. The Society provides support in many areas, including transport to appointments, information on cancer and its treatments and social and emotional support outside the hospital through its support groups, or more personal one-on-one contact.

Many patients and their families tell me that they have found the help of the Cancer Society has been of great assistance and support for them in dealing with the new, complex and often frightening experiences that can surround a cancer diagnosis and its treatment.

However, the Cancer Society is also very actively involved in many other areas of the cancer continuum. It is one of the major funders of research into finding new and better treatments for cancer; it is very active in the promotion of healthy lifestyles to reduce the incidence of cancer and a major source of public education across the whole cancer continuum.

I have had an association with the Cancer Society for over 20 years now and I have consistently found it to have an integral and vital role in cancer care. I continue to support it and its work wholeheartedly.

***Dr Garry Forgeson***  
*Medical Oncologist,  
Midcentral Health; President,  
Central Districts Division,  
Cancer Society of New Zealand*



# WHY MAKE A BEQUEST?

The Cancer Society is very much dependant on the geneous support of its communitites, ie donations and bequests, to continue our work. We remain the only charity to address all cancers. We're proud that our services remain free, confidential and accessible to all. Making a bequest is ensuring the good work we do continues into the future.

Your deferred gift, by way of a bequest, is one of the most thoughtful gifts you can give in your lifetime. It's your way of 'paying it forward' to future generations. No matter what size your bequest is, you will be helping people in your community to cope with, and overcome cancer.



SUPPORTIVE CARE



HEALTH PROMOTION



RESEARCH



VOLUNTEERING



# HOW WILL THE CANCER SOCIETY USE MY BEQUEST?

Naming the Cancer Society in your Will is a very powerful and significant gift. Here are some ways your gift could help our work into the future:



## Transport to TREATMENT

*Fund our transport to treatment programme, ensuring anyone going to a cancer related treatment or appointment has transport free of charge.*



## Shuttle SERVICE

*Help run our shuttle service for patients that need to travel out-of-town to have treatment.*



## Health PROMOTION

*Support and promote health education programmes such as SUNSMART, SMOKE FREE, and NUTRITION & PHYSICAL activity.*



## **Counselling SESSIONS**

*Provide counselling sessions and support group programmes for those affected by cancer.*



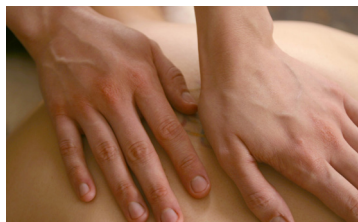
## **Cancer RESEARCH**

*Enable us to continue to fund ground-breaking cancer research, through project grants for scientists. Their projects concentrate on finding new and better ways to prevent, diagnose, and treat cancer. Gift to Cancer Research Central Districts Division if this is where you would like your bequest to be specifically used.*



## **Free CANCER INFORMATION HELPLINE**

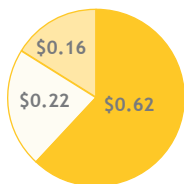
*Employ experienced cancer nurses that provide information and support through our 0800 CANCER information helpline, ANY CANCER ANY QUESTION.*



## **MASSAGE**

*Allow patients to receive free massage therapy while undergoing treatment.*

Your bequest would be processed centrally to save costs and then forwarded to your local Cancer Society centre. On average in the central districts region for every \$1 donated 62c is used to bring support, hope and guidance to people living with Cancer. 22c is used to help raise funds for the future and 16c to make it all happen.



## WHAT TO DO

The easiest way to make your bequest happen is to talk to your solicitor or trustee. After you have looked after family and friends you may wish to also make provision for the Cancer Society. This can be done by:

- Including the Cancer Society when making a new Will
- Adding the Cancer Society to your existing Will by making a codicil
- Varying your family trust to include the Cancer Society as a beneficiary.

Please also ensure you speak to your family and friends about your decisions, so they can support the achievement of your charitable goals when the time comes.

## FULFILLING YOUR EXACT WISHES

If you'd like to leave a specific amount, or to nominate that your bequest be used for a specific purpose, we'd be happy to discuss your options in person.

# 3 SIMPLE WAYS TO REMEMBER THE CANCER SOCIETY IN YOUR WILL

After providing for friends and family you can choose which way suits you best to include a gift:

## 1 A residual gift

After providing for your family, you can nominate that you want to leave part or all of what is left of your estate (the residual)



## 2 A percentage

You can leave a nominated percentage or fraction of your estate, just 1% would make a difference



## 3 A specific gift

You can also choose to leave a set amount of money, real estate or any gift you may wish to nominate



# LETTING US KNOW YOU'VE HELPED

We encourage our supporters to let us know if you have left a gift in your Will. Telling us your wishes is of course 100% confidential. There is no need to specify an amount, just a simple phone call, email or letter to tell us you have formally made this pledge is all we need so we can acknowledge your generosity.

After acknowledging your support we will keep you up to date with our work on an annual basis.

We are sincerely grateful to those visionary benefactors who have or are in the process of planning a bequest in support of the Cancer Society. Ultimately your bequest enables the Society to continue providing its wide range of services free of charge as well as secure the long term future of the Cancer Society.





# MAKING A BEQUEST MADE EASY

Send this form to your lawyer or the Public Trust to advise them that you wish to mention The Cancer Society of New Zealand in your will. They will then contact you to confirm your exact wishes. Alternatively just talk to them directly.

To: (name of your lawyer of the public Trust)

From: (your name and address)

## SUGGESTED WORDING FOR A GIFT IN YOUR WILL

I give and bequeath to Cancer Society of New Zealand, (your region) .....% of my estate (or the sum of \$....., or the residue of my estate or description of assets or property) free of all duties to be applied to Research/ General Purposes (select one). The official receipt of an authorised officer of the organisation shall be complete and sufficient discharge for the Executor.

Re: My Will/Family Trust Memorandum of Wishes

I would like to make and/or change my Will and/or Family Trust Memorandum of wishes to make provision for the Cancer Society of New Zealand, (your region).

- The Cancer Society of New Zealand Central Districts Division Inc
- Cancer Research - Central Districts
- The Cancer Society of New Zealand Gisborne/East Coast Centre Trust
- The Cancer Society of New Zealand Hawke's Bay Centre Inc
- The Cancer Society of New Zealand Manawatu Centre Inc
- The Cancer Society of New Zealand Whanganui-Rangitikei -Waimarino Centre Inc
- The Cancer Society of New Zealand Taranaki Centre Inc

### **Supporting YOUR community**

Including the correct wording for each region is hugely important as it ensures that any bequest made will be returned to the region of your choice to be used for services and support of cancer patients in your own community.

*If you have any further questions please don't hesitate to contact us directly.*

Contact: The Bequest Coordinator,  
The Cancer Society, Central Districts Division  
135 Ruahine Street, PO Box 5096,  
Palmerston North 4441

T: 06 356 4011

E: [mail@cancercd.org.nz](mailto:mail@cancercd.org.nz)

W: [cancernz.org.nz](http://cancernz.org.nz)

F: Cancer Society NZ - Central Districts

# CONTACT US TODAY

For a confidential, no-obligation chat about leaving a bequest to The Cancer Society New Zealand, contact the Cancer Society Central Districts office on **06 356 4011** or by emailing **mail@cancercd.org.nz**

Alternatively you may like to visit your local Cancer Society branch:

## CANCER SOCIETY, CENTRAL DISTRICTS DIVISION INC

Addis House, 135 Ruahine Street, PO Box 5096  
Palmerston North 4441

T: 06 356 4011

E: [mail@cancercd.org.nz](mailto:mail@cancercd.org.nz)

W: [cancernz.org.nz](http://cancernz.org.nz)

F: Cancer Society NZ, Central Districts

## GISBORNE/EAST COAST CENTRE

Gisborne Hospital, Ormond Rd, PO Box 708  
Gisborne 4040

T: 06 867 1795

E: [enquiries.gis@cancercd.org.nz](mailto:enquiries.gis@cancercd.org.nz)

W: [cancernz.org.nz](http://cancernz.org.nz)

F: Cancer Society Gisborne East Coast

## HAWKE'S BAY CENTRE

310 Orchard Rd, P.O Box 1014, Hastings 4156

T: 06 876 7638

E: [enquiries.hb@cancercd.org.nz](mailto:enquiries.hb@cancercd.org.nz)

W: [cancernz.org.nz](http://cancernz.org.nz)

F: Cancer Society HB

## MANAWATU CENTRE

Addis House, 135 Ruahine Street, PO Box 5170  
Palmerston North 4441

T: 06 356 5355

E: [enquiries.mtu@cancercd.org.nz](mailto:enquiries.mtu@cancercd.org.nz)

W: [cancernz.org.nz](http://cancernz.org.nz)

F: Cancer Society Manawatu

## WHANGANUI CENTRE

3 Koromiko Rd, PO Box 7116 , Whanganui 4541

T: 06 348 7402

E: [enquiries.wgi@cancercd.org.nz](mailto:enquiries.wgi@cancercd.org.nz)

W: [cancernz.org.nz](http://cancernz.org.nz)

F: Wanganui Cancer Society

## TARANAKI CENTRE

71 Lorna Street, PO Box 5153, Westown  
New Plymouth 4343

T: 06 757 3006

E: [enquiries.tar@cancercd.org.nz](mailto:enquiries.tar@cancercd.org.nz)

W: [cancernz.org.nz](http://cancernz.org.nz)

F: Cancer Society of NZ Taranaki Centre Inc

**Any Cancer, Any Question**  
**0800 cancer (226237)**  
**Cancer Information Helpline**



**Cancer  
Society**

Te Kāhui Matepukupuku  
o Aotearoa